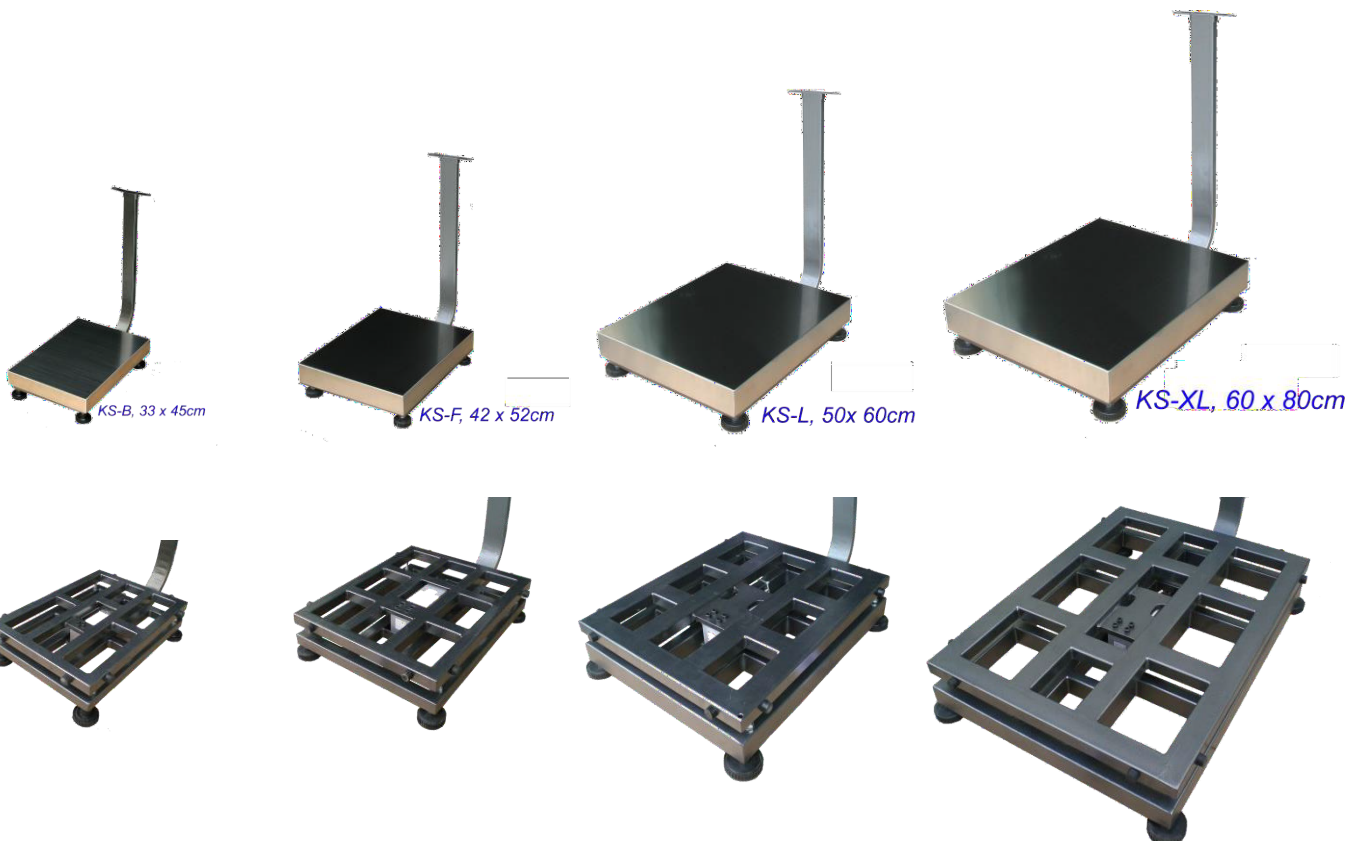




Key Features

- Epoxy Coated Heavy Duty Q235 Mild Steel Structure
- 4 Platform Sizes
- Capacities Range 30kg ~ 600kg
- Fitted with OIML R60 Approved C3 Load Cell.
- Configured according to WELMEC2 Legal for Trade Requirements (Indicators span gain $\leq 1.5\mu\text{v}$ per scale verification interval, $n_{\text{max}} \leq 3000$)
- Eccentric Accuracy = better than 6000 ~ 7500d
- Safe Overload = 150%
- Ultimate Overload = 300%
- #304 Stainless Steel Platform Cover with Noise Absorption Layer
- Overload and Transportation Protection Device
- Pillar, Adjustable Feet and Bubble Level Included
- Packing Box Includes Space for Indicator



Heavy Duty Weighing at Affordable Budget

KS Series Heavy Duty Single Point Platforms

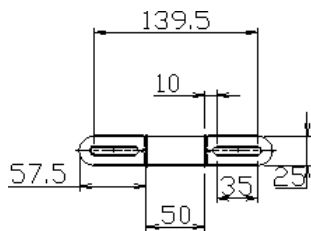
Specifications

Model	Max (kg)	E _{max} (kg)	Platform Dimension	Cable Length
KS-B30	30	50	330 x 450mm	2000 ±100mm
KS-B60	60	100		
KS-B150	150	200		
KS-F30	30	50	420 x 520mm	3000 ±100mm
KS-F60	60	100		
KS-F150	150	200		
KS-F300	300	500		
KS-F600	600	750	500 x 600mm	3000 ±100mm
KS-L30	30	50		
KS-L60	60	100		
KS-L150	150	200		
KS-L300	300	500		
KS-L600	600	750	600 x 800mm	3000 ±100mm
KS-XL60	60	100		
KS-XL150	150	200		
KS-XL300	300	500		
KS-XL600	600	750		
Load Cell	OIML R60 Approved Aluminum Load Cell. Output = 2mV/V. Output Impedance = 350 ohm			
Operating Environment	-10~40°C(14~104°F) Non-condensed R.H. ≤85%			

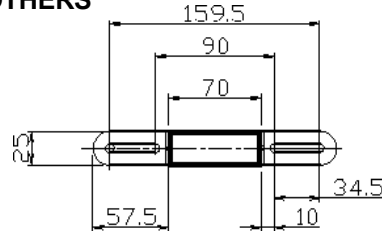
In the interest of improvement, specifications may change prior to notice

Indicator Mounting Plate on Top of Pillar

KS-B



OTHERS



Dimensions (mm)

Platform	a	b	c	d
KS-B	330	450	108	525
KS-F	420	520	128	620
KS-L	500	600	147	620
KS-XL	600	800	147	620

